



中宠股份  
ODS

证券简称：中宠股份 证券代码：002891

# CHINA PET FOODS 2022 CSR Report

2022

CHINA  
PET FOODS

Report Description /

" "

2022

Report time range

2022 1 1 2022 12 31

Report organizational scope

Report Data Range



01 Company profile

04 Protection of rights and interests of clients & consumers

02 Corporate governance

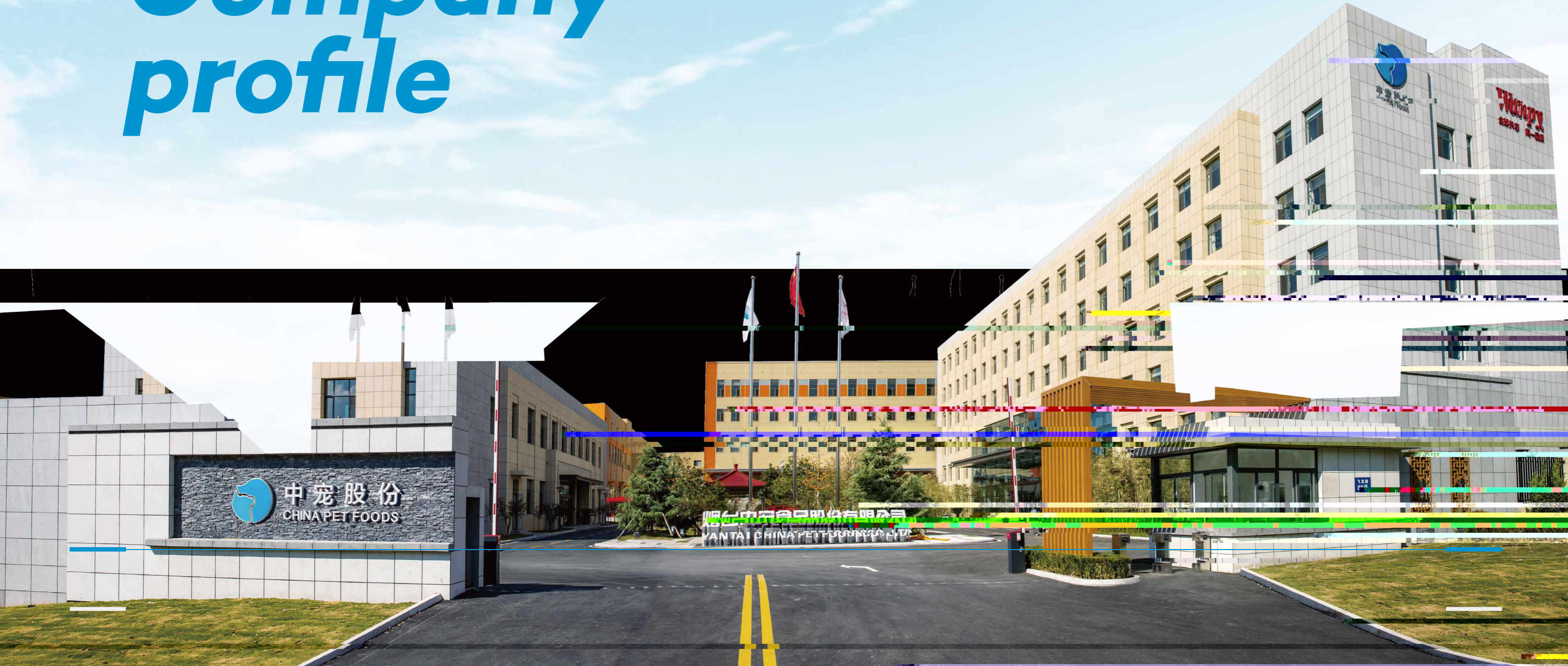
05 Environmental protection and sustainable development

03 Protection of rights and interests of employees

06 Public relations and social welfare undertakings

07 Look into the future

# Company profile



 中宠股份  
CHINA PET FOODS

烟台中宠食品股份有限公司  
YANTAI CHINA PET FOODS CO., LTD.

# Company Profile

1998

25

25

21

67

1998

25

2017

002891

21

1

1000

67

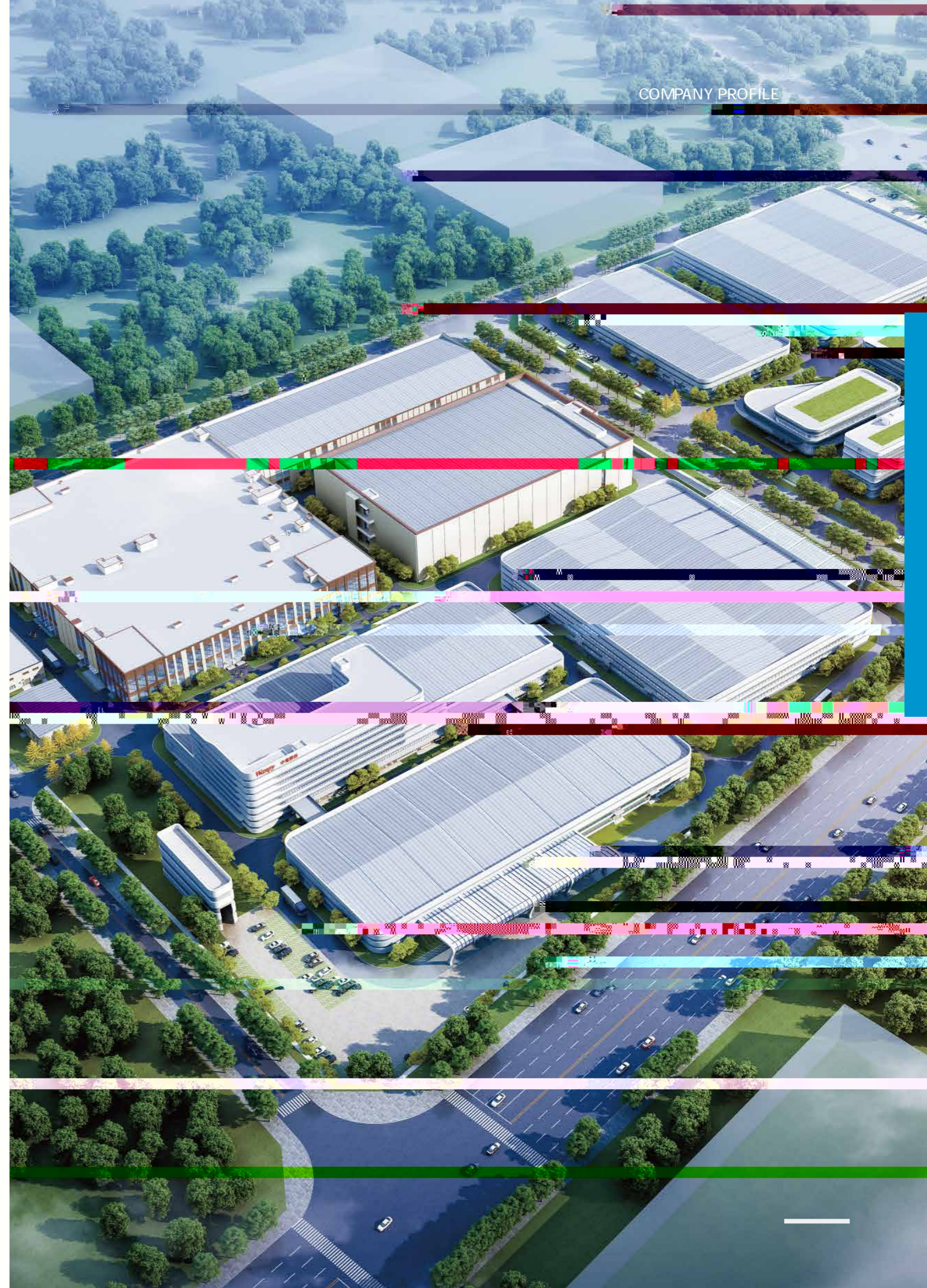
Wanpy

55

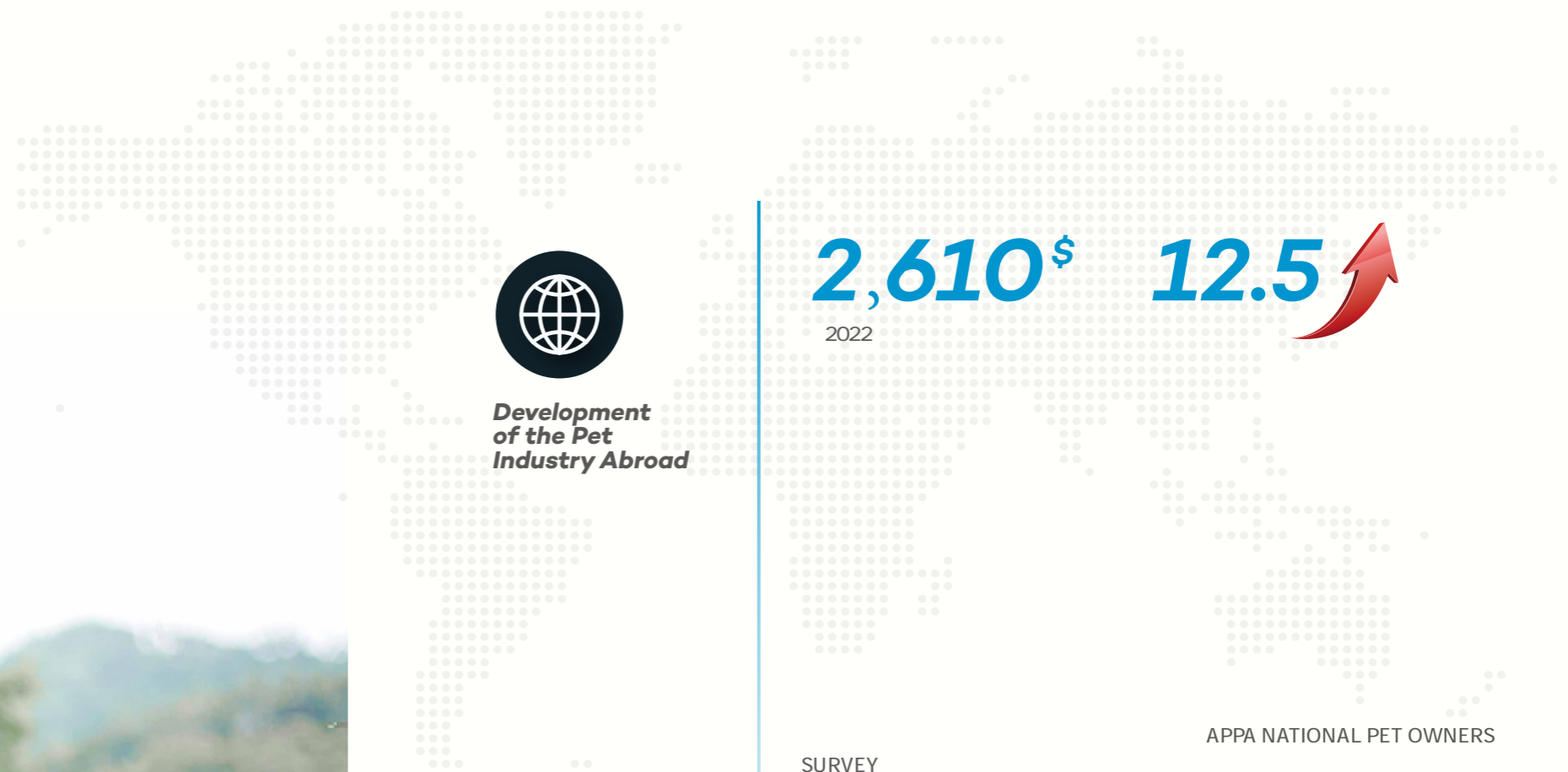
"

"

25



# Industry Overview



**2,610\$**  
2022

**12.5**



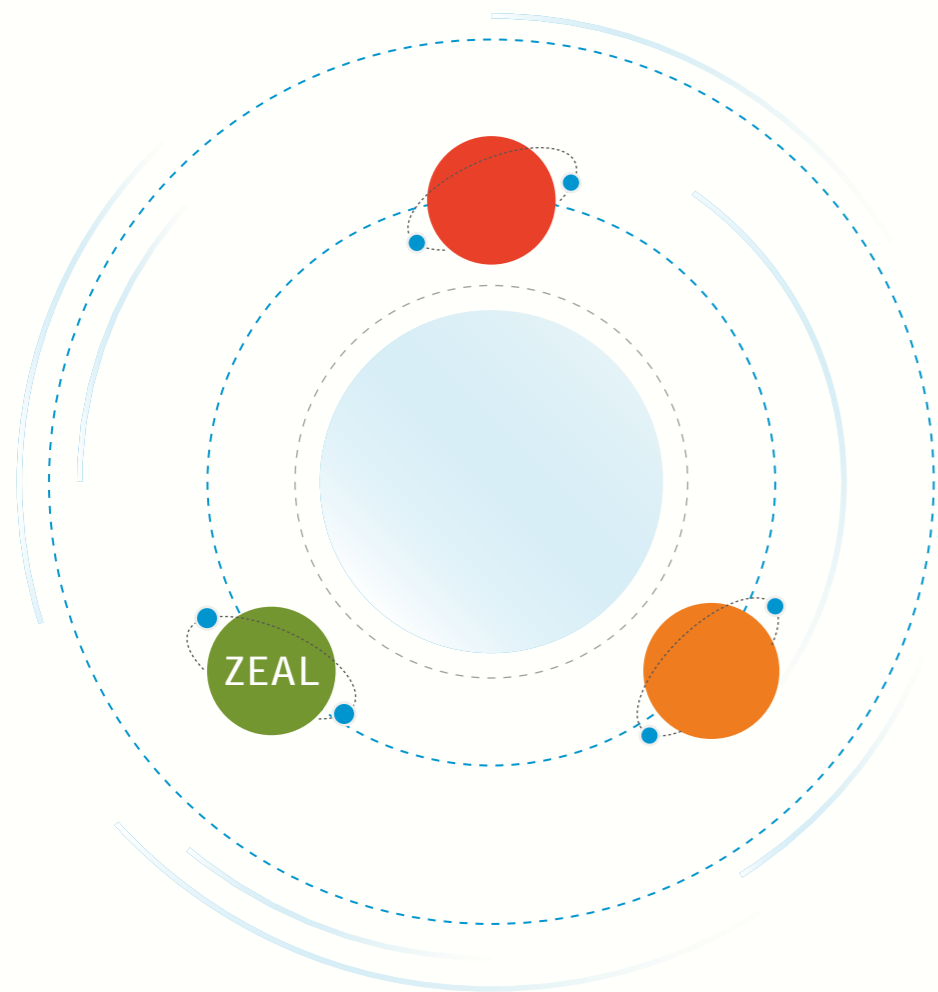
**Development and trends of china 's pet industry and pet owners**

SURVEY

APPANATIONAL PET OWNERS	
APPANATIONAL PET OWNERS	2022 8,690 66%
U.S. Pet Market Outlook	2021 10.8% 2022 1368
U.S. Pet Market Outlook	2025 201 1,550.4 2021-2022 90
GDP	21

# Core Competitiveness

"Wanpy" "Zeal" "Toptrees"



# wanpy®

"Wanpy" "1998"

"62%"



200g  
94%%  
40%  
2

AAFCO

4  
91%  
2  
0 0

0

4  
91%  
2  
0 0





CHINA PE

COMPANY PROFILE



  
**186**  
**15**  
**7**  
**164**

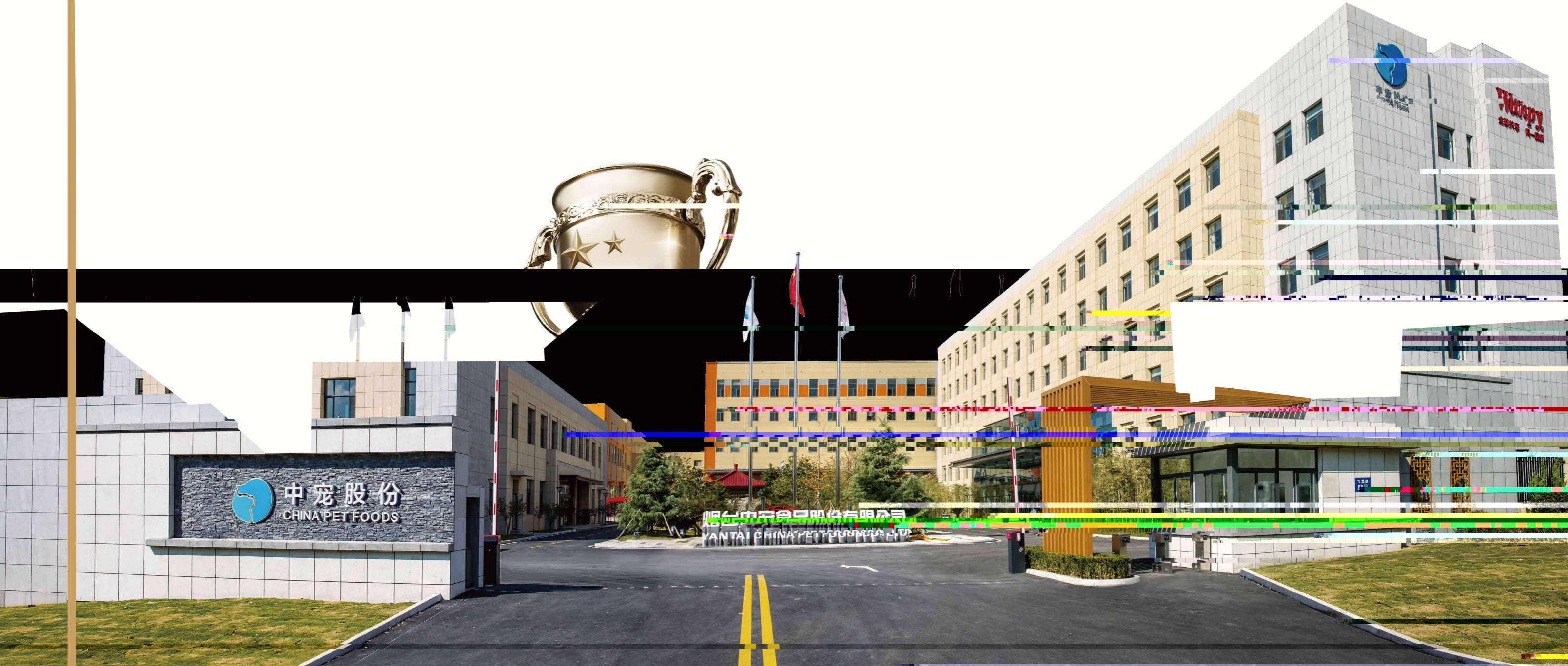


2022 8



Corporate  
Honors

Corporate



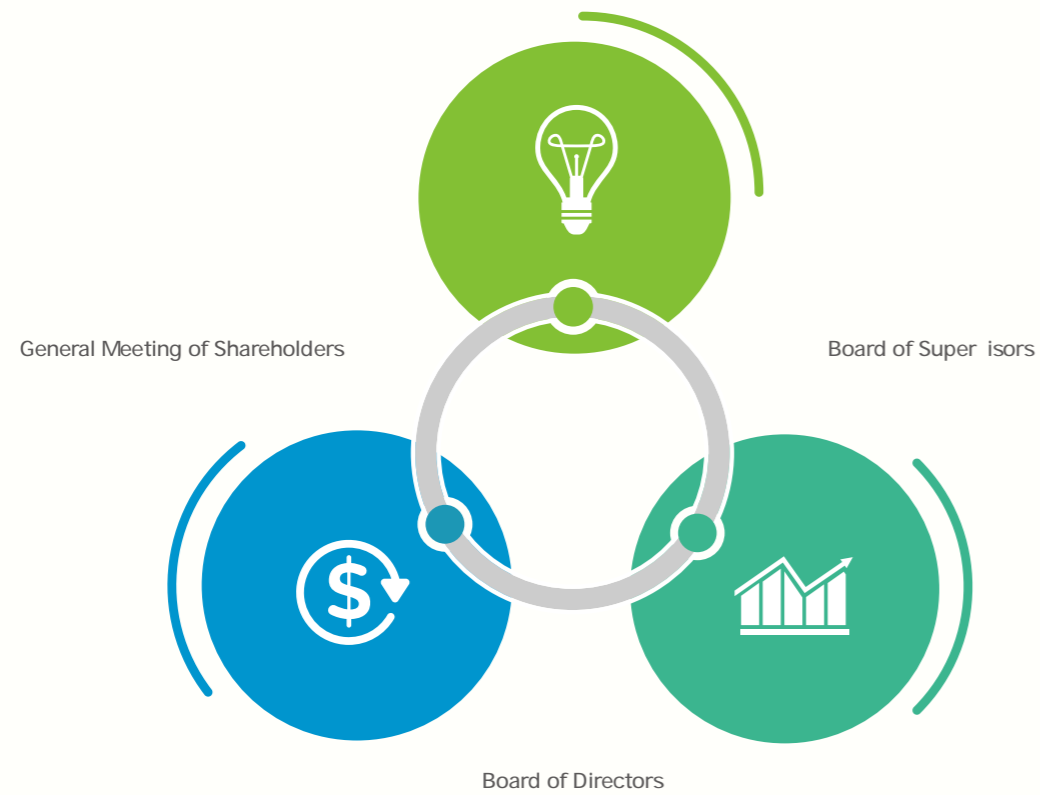
# *Company governance*



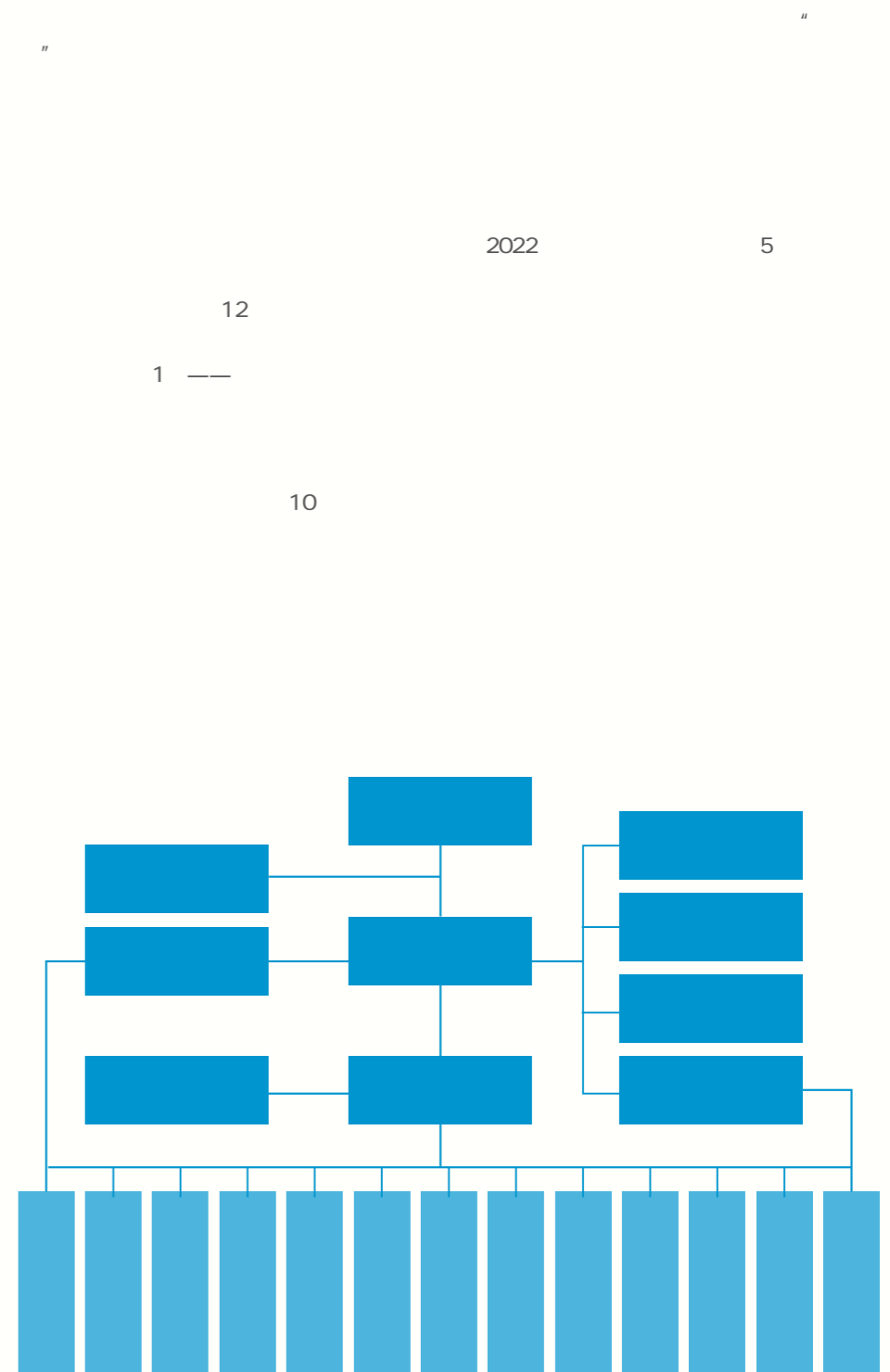
# Company Governance

A sound operational system for the three meetings

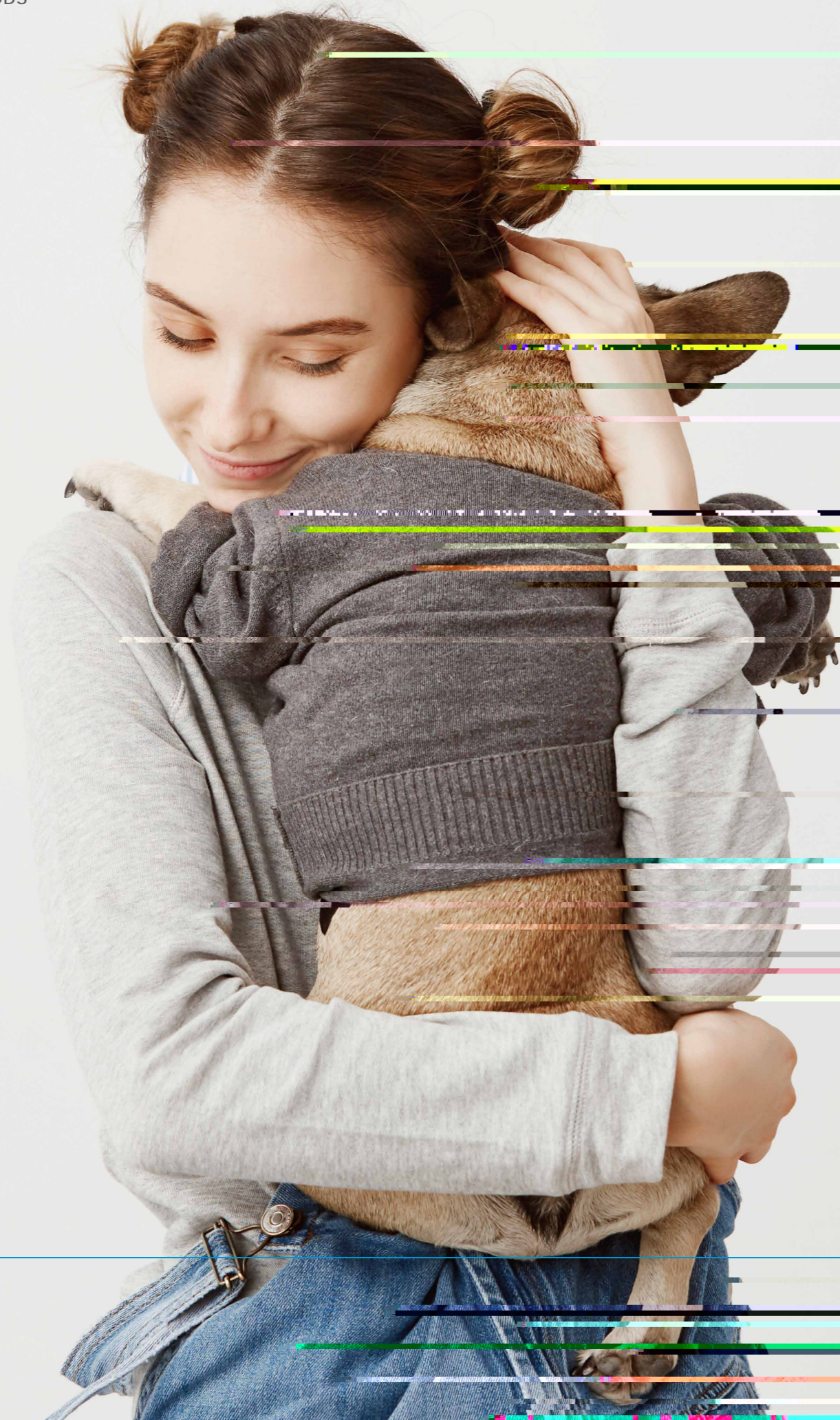
1



5  
12  
10







# *Protection Of Rights And Interests Of Employees*

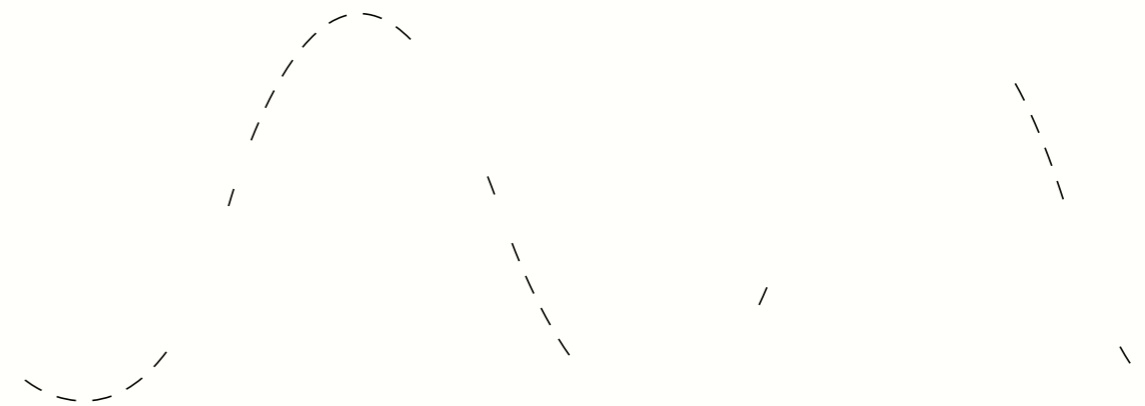
## Protection of rights and interests of employees

“ ”

报告期末母公司在职工的数量 (人)	1210
报告期末主要子公司在职工的数量 (人)	1985
报告期末在职工的数量合计 (人)	3184
当期领取薪酬员工总人数 (人)	4855
母公司及主要子公司需承担费用的离退休职工人数	0
	专业构成人数 (人)
	2040
	395
	230
	46
	155
	329
	3195
	73
	452
	2670
	3195

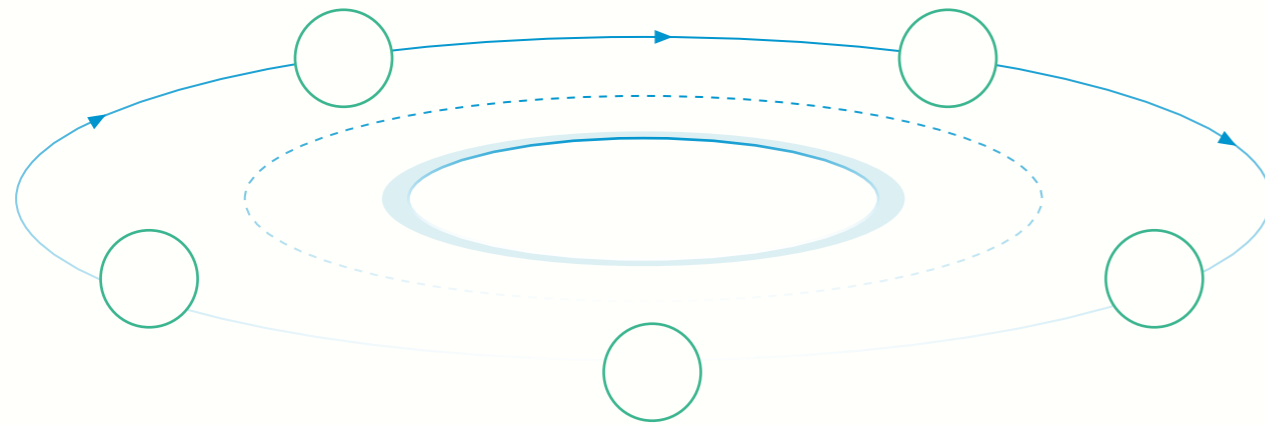
## Salary and Promotion Policy

“ ”



### Safety production

2022



### Vocational skill training



2022 6 24  
MBA



2022 7 " "

### Employee benefit policy

2022

6

" "

2022

9

" "

340

6

" "



# ***Protection of Rights and Interests of Suppliers, Clients & Consumers***



## Supplier management

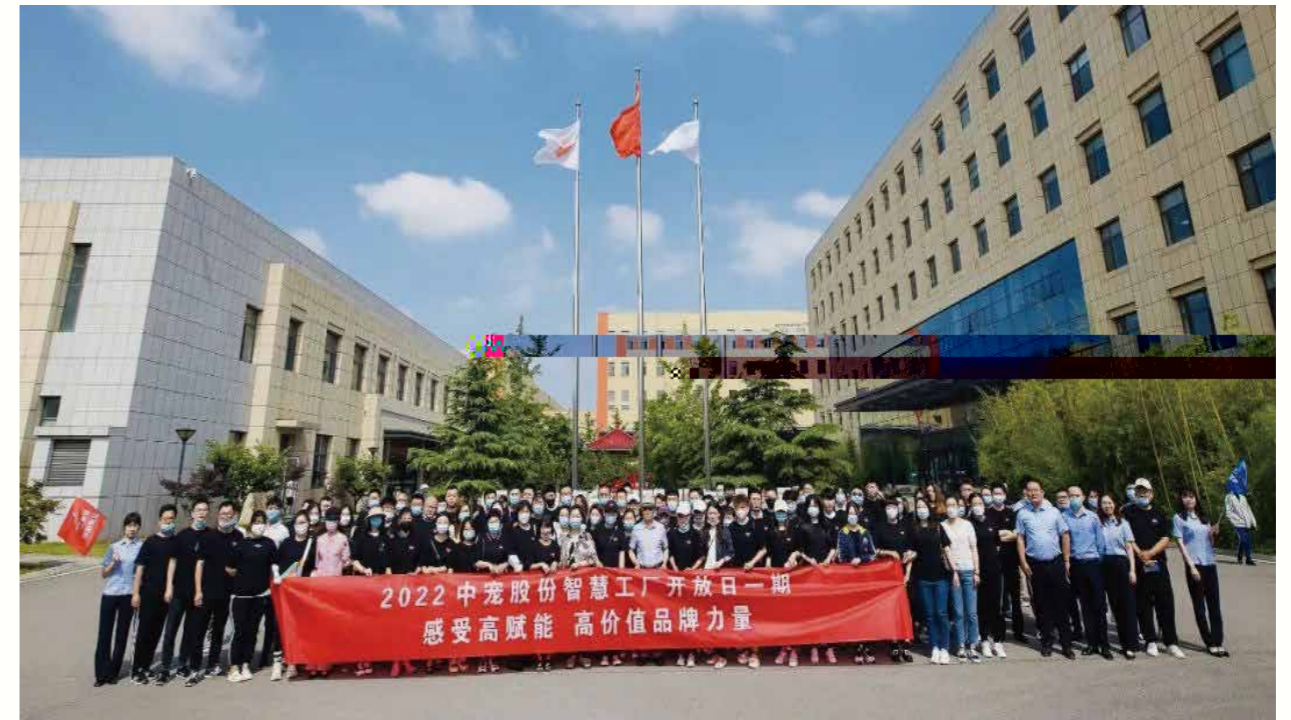


open and transparent



impartial and honest

## Protection of rights and interests of clients and consumer



# *Environmental protection and sustainable development*



## Environmental protection and sustainable development

2021 10

3,100,000  
2100

2  
2000

2022

7000

2.4MWp  
318



# ***Public relations and social welfare undertakings***



# Public relations and social welfare undertakings

11083

2022  
3000

2022 3

8



30

KING KITTY



wanpy



2022 5 5

2021  
“2021

# Look into The future

25

